

BETTY WHO RELEASES SOPHOMORE ALBUM THE VALLEY TODAY

**PERFORMED “SOME KINDA WONDERFUL” ON *THE TODAY SHOW*
THIS MORNING**

**TICKETS FOR “PARTY IN THE VALLEY” NORTH AMERICAN TOUR
AVAILABLE NOW**



(Los Angeles, CA)—Today, critically acclaimed pop artist, Betty Who, releases her sophomore album entitled *The Valley*. The album includes her latest single “Some Kinda Wonderful”, along with recently released tracks “Human Touch”, “You Can Cry Tomorrow”, “Mama Say”, and her cover of Donna Lewis’ “I Love You Always Forever”. It also includes features by Warren G and Superfruit. *The Valley* is available now at all digital retail providers. See full track listing below.

1. The Valley
2. Some Kinda Wonderful
3. You Can Cry Tomorrow
4. Mama Say
5. Human Touch
6. Free to Fly (feat. Warren G)
7. Wanna Be

8. Pretend You're Missing Me
9. Blue Heaven Midnight Crush
10. Make You Memories
11. Reunion
12. Beautiful (feat. Superfruit)
13. I Love You Always Forever

Betty Who also performed "Some Kinda Wonderful" on *The Today Show* this morning.

Click [HERE](#) to watch.

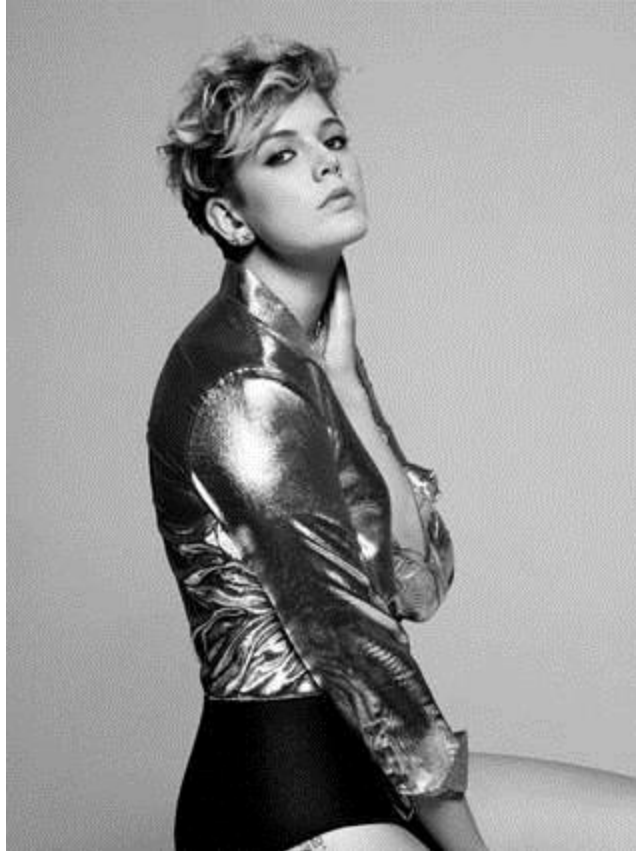
Additionally, Betty Who announced the "Party In The Valley" Presented by Maltesers North American tour in support of her upcoming album. The tour, which will be supported by pop singer-songwriter VÉRITÉ, will be kicking off April 12th in New Haven, and will be making stops in a number of major cities including New York, Chicago, Denver, and concluding in Los Angeles. Tickets for the "Party In The Valley" tour are on sale now. Click [HERE](#) to purchase. See full list of tour dates below.

Tour Dates

WED	4/12	The Ballroom @ The Outer Space	New Haven, CT
FRI	4/14	Webster Hall	New York, NY—SOLD OUT
SAT	4/15	Royale	Boston, MA
SUN	4/16	9:30 Club	Washington, DC—SOLD OUT
MON	4/17	Union Transfer	Philadelphia, PA
WED	4/19	Rex Theater	Pittsburgh, PA
THU	4/20	Concord Music Hall	Chicago, IL
SAT	4/22	Triple Rock Social Club	Minneapolis, MN—SOLD OUT
SUN	4/23	Bluebird Theater	Denver, CO
MON	4/24	Urban Lounge	Salt Lake City, UT
WED	4/26	Neumos	Seattle, WA
THU	4/27	Imperial	Vancouver, BC
FRI	4/28	Wonder Ballroom	Portland, OR
SUN	4/30	Harlows	Sacramento, CA
TUE	5/2	The Fonda Theater	Los Angeles, CA

About Betty Who

Once described by New York Magazine as a mix of "early Madonna...Katy Perry and Robyn, with spunk and confidence", and by Elle as "your next pop obsession", Australian pop-singer, Betty Who, is a force to be reckoned with. She has built a passionate and loyal fan base through her early EP's, undeniable charisma and ecstatic live show. Who independently released her first EP entitled *The Movement EP*, in which the lead single and fan favorite, "Somebody Loves You" debuted at #4 of Spotify's most viral list. Her follow-up EP, *Slow Dancing*, was released via RCA Records and debuted at #1 on the iTunes Pop Chart. The success of Who's early EP's eventually led to the release of her debut LP entitled *Take Me When You Go* (RCA Records), along with performances on *The View*, *The Today Show*, and *Late Night With Seth Meyers*, as well as tours with both Katy Perry and KIESZA. To gear up for her second full-length album, Betty Who released her cover of Donna Lewis' "I Love You Always Forever", which received critical praise from the likes of *SPIN*, *Entertainment Weekly*, *Vogue*, and more. Click [HERE](#) to watch the music video. Since then, Betty has released the first single off of her upcoming second album entitled "Human Touch", along with an acoustic version of the song featuring Australian singer-songwriter, Jarryd James (Click [HERE](#)). She also released the second single entitled "Some Kinda Wonderful" along with the music video (Click [HERE](#) to watch), and most recently, the music video for "Mama Say" (Click [HERE](#) to watch). With the release of her upcoming album and North American Tour, Betty Who continues to prove she has a lot more magic up her sleeve.



To Buy or Stream *The Valley*:

iTunes: <http://smarturl.it/BWTheValley>
Amazon Music: <http://smarturl.it/TheValleyAmz>
Google Play: <http://smarturl.it/TheValleyGP>

Follow Betty Who:

[FACEBOOK](#) | [TWITTER](#) | [INSTAGRAM](#) | [SOUNDCLOUD](#)

For more information on Betty Who:

Jamie Abzug
RCA Records
Jamie.Abzug@rcarecords.com / 310-272-2620